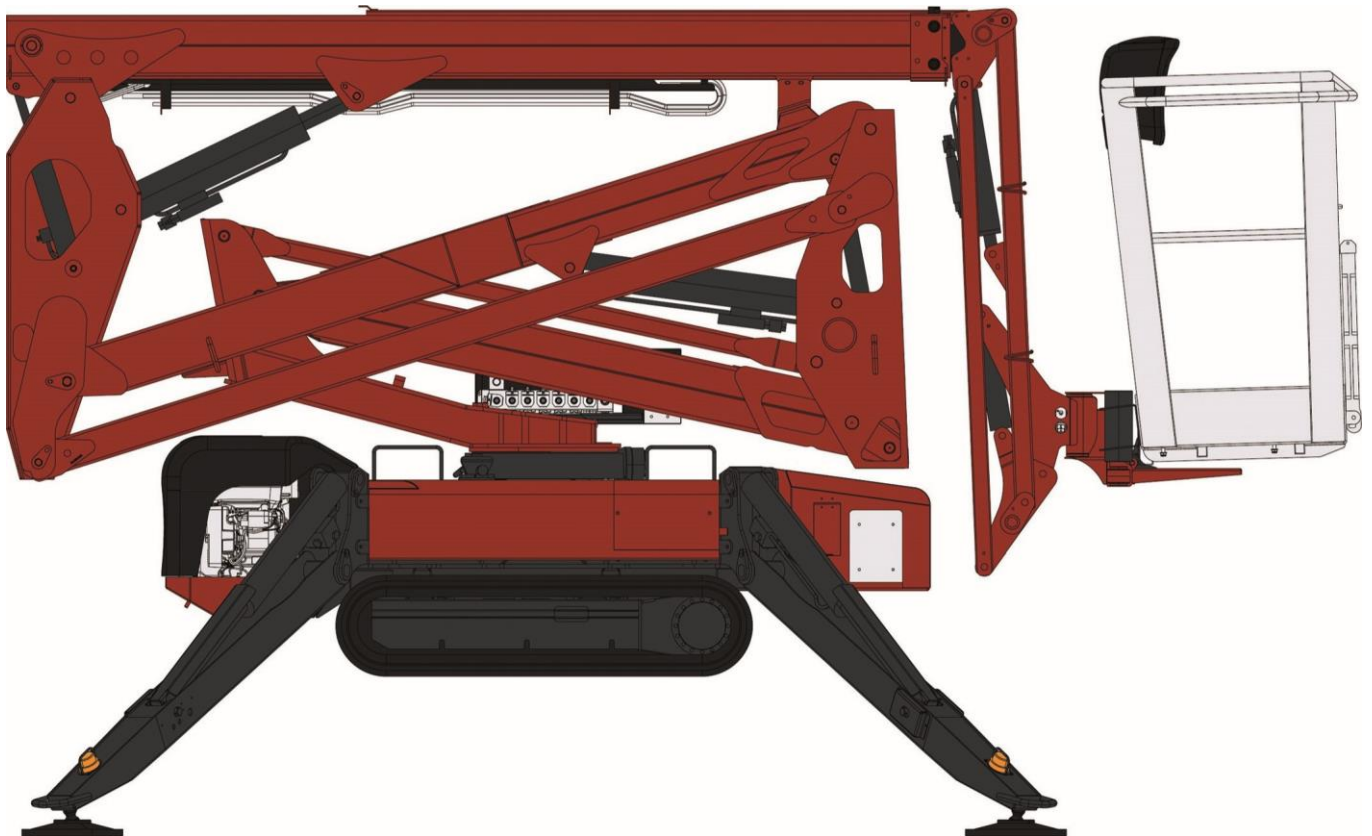


LIGHTLIFT 15.70

PERFORMANCE III S

NEW!
TRACKED
AERIAL PLATFORM

- Max. working height 15,40 m
- Horizontal outreach 6,60 m with 10 m continuous outreach with flush with the wall trajectory



- 230 kg capacity for the whole working area
- Basket with rotation standard
- Compact stabilization area 2800 x 2800 mm
- Weight: 1950 kg (petrol version)

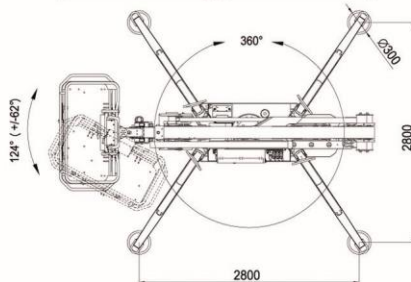
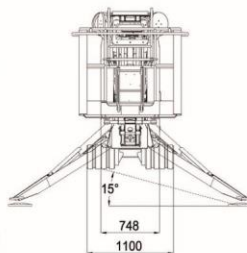
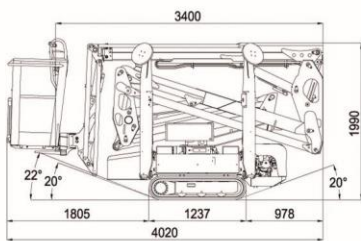
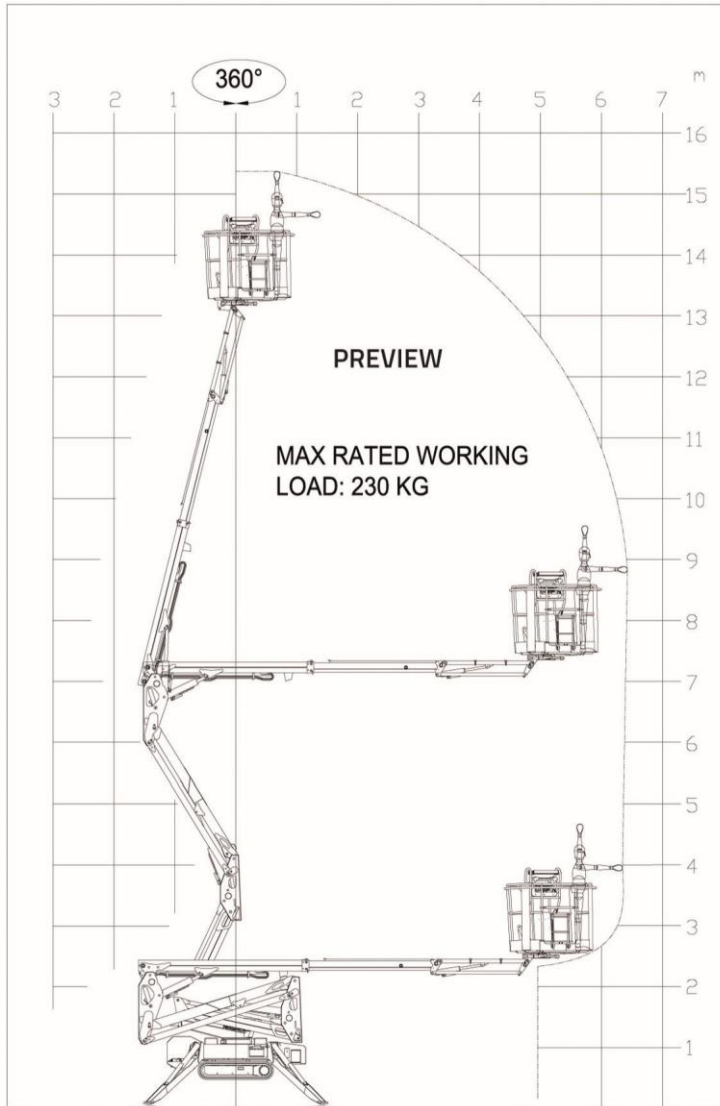


[Xtra Materieel](#)

[Delftweg 114D](#)

[3034 NB Rotterdam](#)

[010 - 4620010](#)



PREVIEW



15,40 m



6,60 m



4,02 m



3,40 m



1,99 m



1335x690xh.1100 mm



124° (+/-62°)



16° / 28,7%



1950 kg / 4299 lb (Honda)



Honda iGX390 - 11,7CV 3600rpm
HATZ 1B40 - 10CV 3600rpm



230V / 50 Hz - 2,2 Kw
110V / 50 Hz - 2,2 Kw



748 / 1100 mm



AUTOMATIC STABILIZING SYSTEM IIIS STD.



REMOTE CONTROL

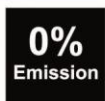


GPRS-GPS MODEM STD.



R.A.H.M. REMOTE ASSISTANCE ON HINOWA MACHINES

Hinowa is continually researching and developing products and reserves the right to make modifications without prior notice. All data in this document is indicative.



OPTIONAL 100Ah / 36V

